



# FIFTY-FIFTY

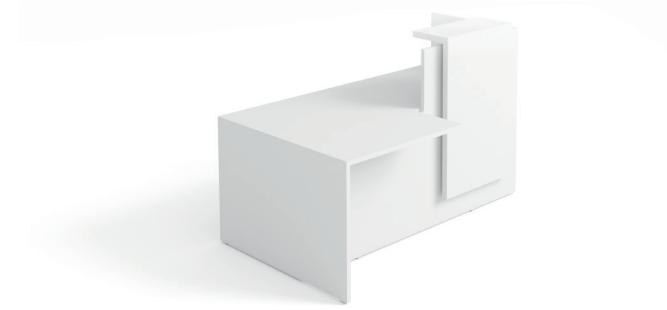
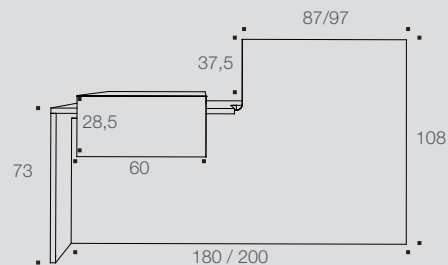
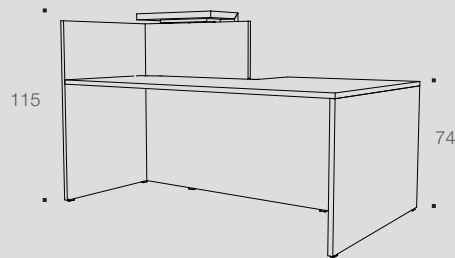
Data sheet n°004



The Fifty-Fifty reception counter exists in DDA right hand return or DDA left hand return.

Dimensions :  
L 180 cm / H 74 to 108 cm / D 70,5 to 108 cm  
or L 200 cm

- Material: Structurex® - MFC\* thickness 25 mm.
- 2 mm ABS edging.
- Assembly : gudgeons screwed with cams tightening and pins wood.
- Rectangular black finish pads.



## Structure

The Fifty-Fifty reception counter is composed by:

- 2 identical panels (dimensions L 177,5 cm / D 70,5 to 108 cm) serving at the same time as top including a DDA top right or left hand return and of facade of the counter.
- 2 identical panels (dimensions L 108 cm / D 70,5 cm) serving at the same time as panel leg and a high side.
- 1 shelf counter (dimension L 60 cm / D 28,5 cm / H 97 cm) in Nitech®, thickness 38 mm, assembled in section by tab serving as reception tablet for the visitors.

## Electrification

The Fifty-Fifty reception counter is endowed with a cut in the shape of D 4,5 cm / L 13 cm to carry cable from desk to floor and also under the DDA Top.

In accordance with NF EN 527-1/-2/-3, NF EN 14074, NFD 62042, ISO 9241-5, XPD 60050.

\*Structurex® - MFC: Melamine-Finished Chipboard, decorative coating imitating a choice of wood species. Counter-balanced and treated against reflection. Density: 636 Kg/m<sup>3</sup> (± 5%) for thickness 25 mm.

*The data contained in this sheet was correct at the time of going to press. The data sheet is not systematically updated unless the basic characteristics of the product are modified. The manufacturer reserves the right to modify its products, without notice.*